



EWP DIVISION

# Build More Profitably

## Profitable & Innovative Building Materials

Profitable builders have a **measurable** competitive edge by using cost-reducing construction techniques that improve building quality at the same time.

Time is money for builders, and National Lumber is always researching for innovative ideas to save you both time and money. We believe in providing the most effective and competitive products, assuring sound, efficient and profitable buildings.

Imagine framing a two-story, 3000 square foot house in a fraction of the time it can take with dimensional lumber. Significantly decreased installation time—meaning labor savings—lets you move on to the next phase faster.

While you're familiar with engineered components such as I-Joists and LVLs, **our Engineered Floor Systems take the process to the next level.**

### Integrated Structural Floor Systems with Precision End Trim (PET)



National Lumber can supply you with a system delivered to the jobsite **with each piece labeled, precision-cut and ready for assembly.** With precision-cut floor framing packages, each piece is precision end trimmed to fit exactly in each location. Less waste is not only environmentally friendly, but it also eliminates waste on the jobsite, **saving you money on waste removal costs.**

Structurally outperforming solid sawn lumber, **Engineered Floor Systems are designed with structural components requiring fewer pieces,**

**saving installation and material costs.** Our Engineered Floor System packages are complete packages; we specify all necessary hangers, connections and columns required for installation.

Each piece is inkjet labeled, bundled by floor, and ready for fast, accurate installation right off the truck. Our color-coded installation plans and corresponding labeled material provide you with **an efficient, hassle-free installation.**

With building energy codes becoming increasingly stringent, Boise Cascade and National Lumber are educating builders on the additional benefits of using EWP construction. **Energy usage of the finished building can be reduced by routing ducts through Engineered Floor Systems between the first and second floors.** Traditionally, duct lines have been put into cold basements and hot attics, increasing heating and cooling costs. Boise Cascade and National Lumber believe that this method can cut home energy costs. **It's also efficient and cost-effective for the builder.**

National Lumber offers engineered floor systems with all necessary perforations cut in advance for mechanical rough-ins to accommodate HVAC, plumbing, etc.

### FLOOR LOC Sub-floor Adhesive



***FLOOR LOC system***  
***Pre-Applied Adhesive***

**National Lumber worked with Boise Cascade to develop the FLOOR LOC process right here in our own manufacturing facility.** This is the next cost-efficient step in the improvement of the framing process.

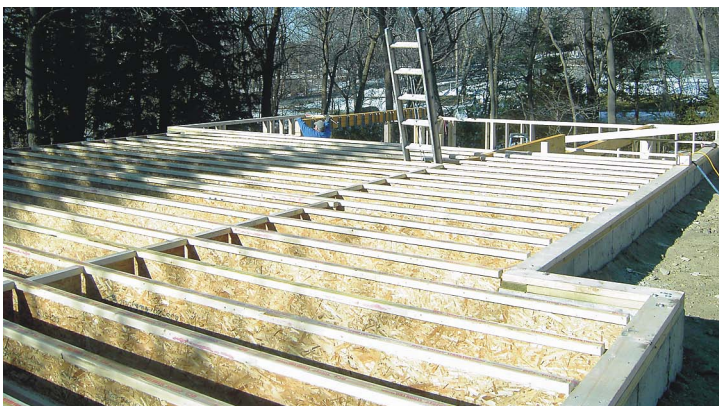
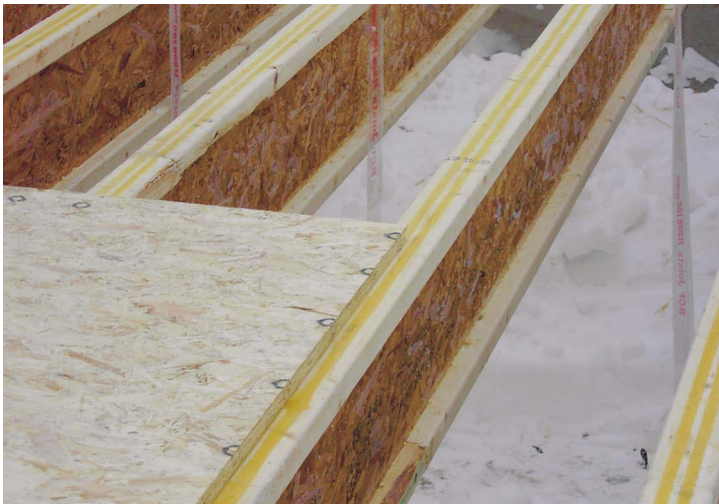
How much time does your framing crew spend properly applying adhesive to I-Joists before installing the sheathing panels? With only a 10-minute window after applying the traditional sub-floor adhesive, only small sections can be done at a time. **Imagine eliminating that step and improving the process by allowing up to 24 hours to install and/or reposition the sheathing panels.** With the FLOOR LOC System framers are able to put down one sheathing panel after another without constantly having to stop and apply more

adhesive to the next section. How much time will that save your crew?

Here at National Lumber, we'll apply each piece with sub-floor adhesive under the controlled environment of our production facility. A protective liner will then cover the adhesive to protect it during shipment and from nature's elements.

The FLOOR LOC System provides consistent application of the sub-floor adhesive and **the protective liner is simply peeled up and taken away**. This is not only faster, it is a safer process for your framing crew.

The sub-floor adhesive in the FLOOR LOC System also remains flexible, reducing unwanted noise transfer.



"I must admit I was skeptical about pre cut rafters but after the pre engineered flooring system came together so nicely you earned my confidence. Our reputation depends on building custom homes to exact standards. The coordination between the field and your shop was flawless and the final product was installed quickly without issues. Well done .....I will be working both systems into our future projects."

David Brookes  
President  
Brookes and Hill Custom Builders



## Exclusive Distributor

**National Lumber is the only supplier of FLOOR LOC pre-applied sub-floor adhesive in the Northeast.**

Time is money. National Lumber's Engineered Floor Systems with Precision End Trimming and FLOOR LOC pre-applied sub-floor adhesive will save you time, and therefore make your jobs more profitable.

**Speak to a National Lumber representative today about making your next project more profitable.**

To learn more, call **1.800.370.WOOD**  
or visit **[national-lumber.com/engineering](http://national-lumber.com/engineering)**

